



Noemi

nata il 22.01.2021 ore 15.00

Kg.

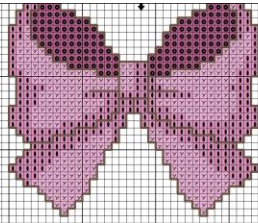
3.00

Gr.

53



Simonetta
Sabatucci



Noemi

Simonetta Sabatucci
www.ideapuntocroce.it

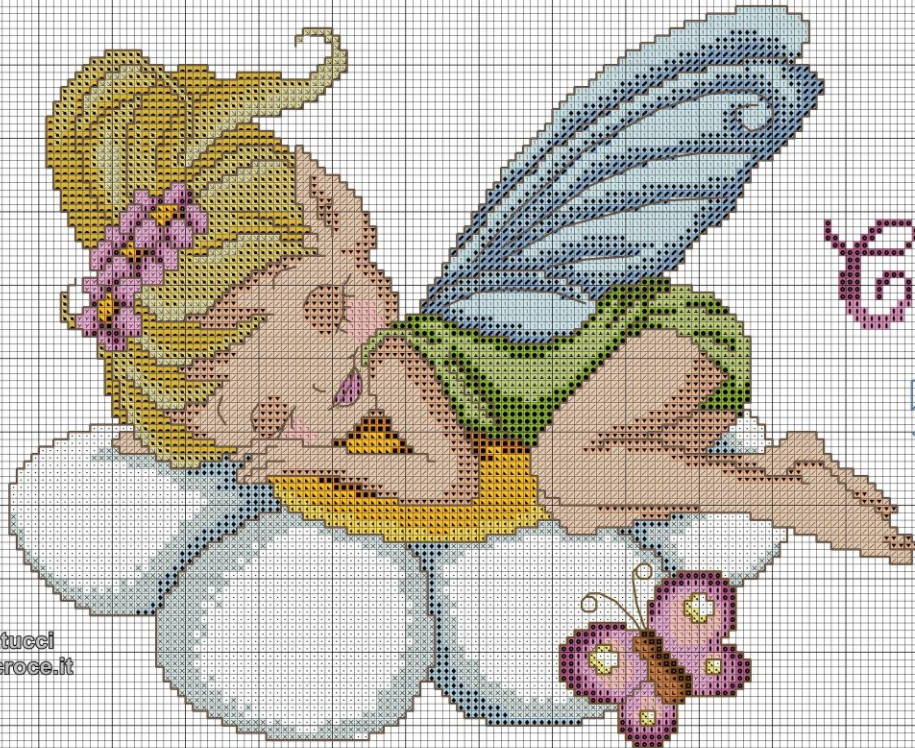
nata il 22.01.2021 ore 15.00

Kg.

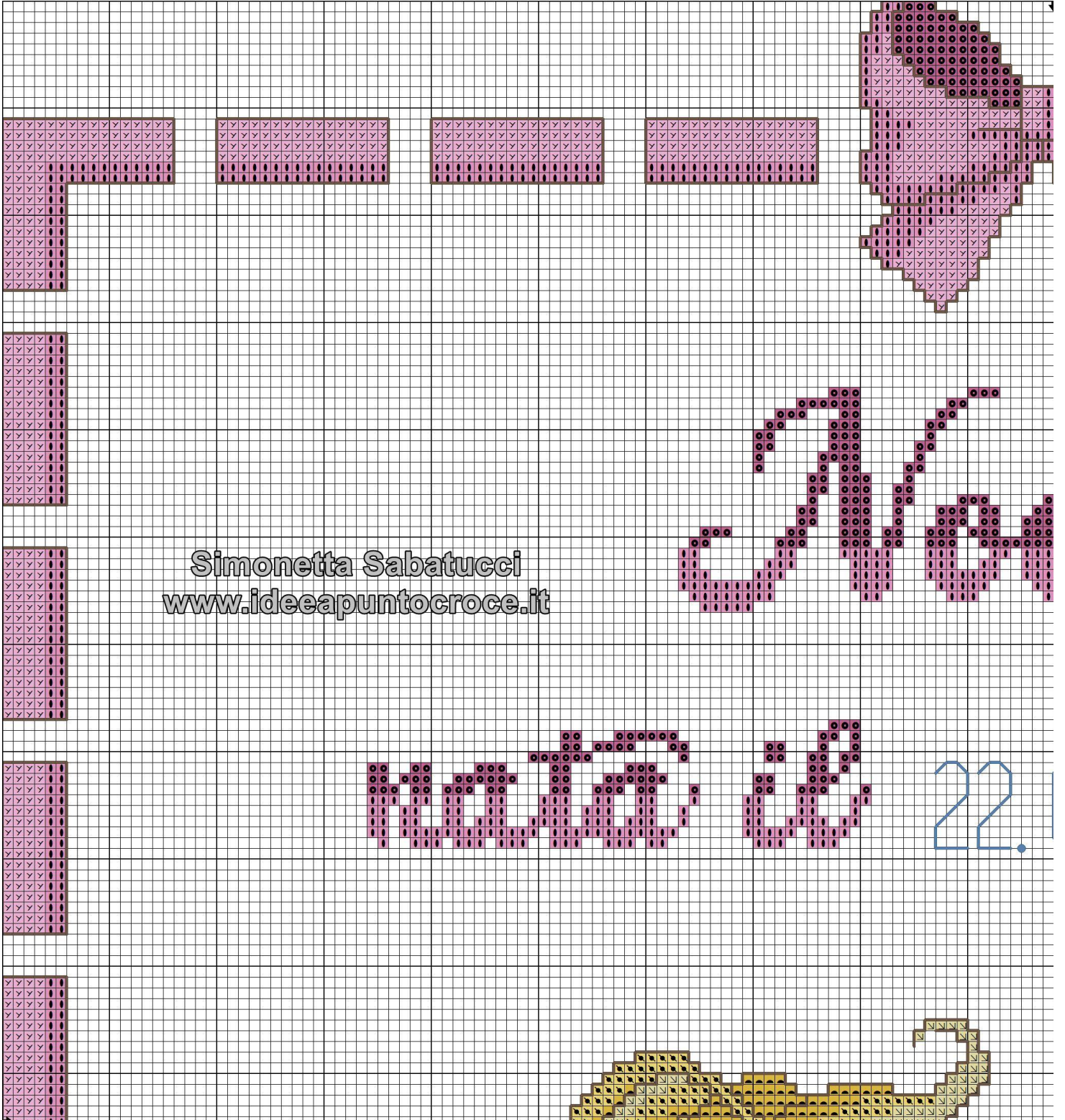
3.00

cm.

53

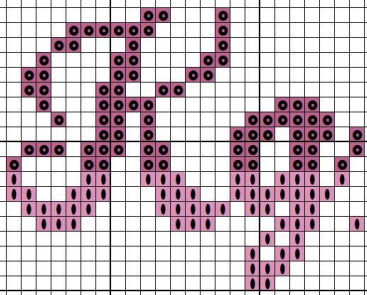


Simonetta Sabatucci
www.ideapuntocroce.it



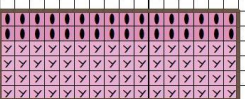
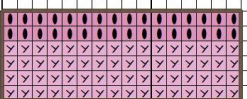
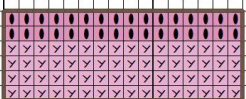
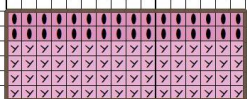
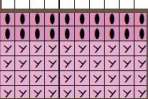
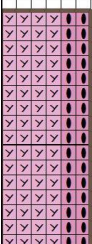
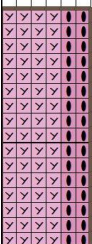
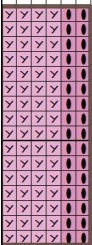
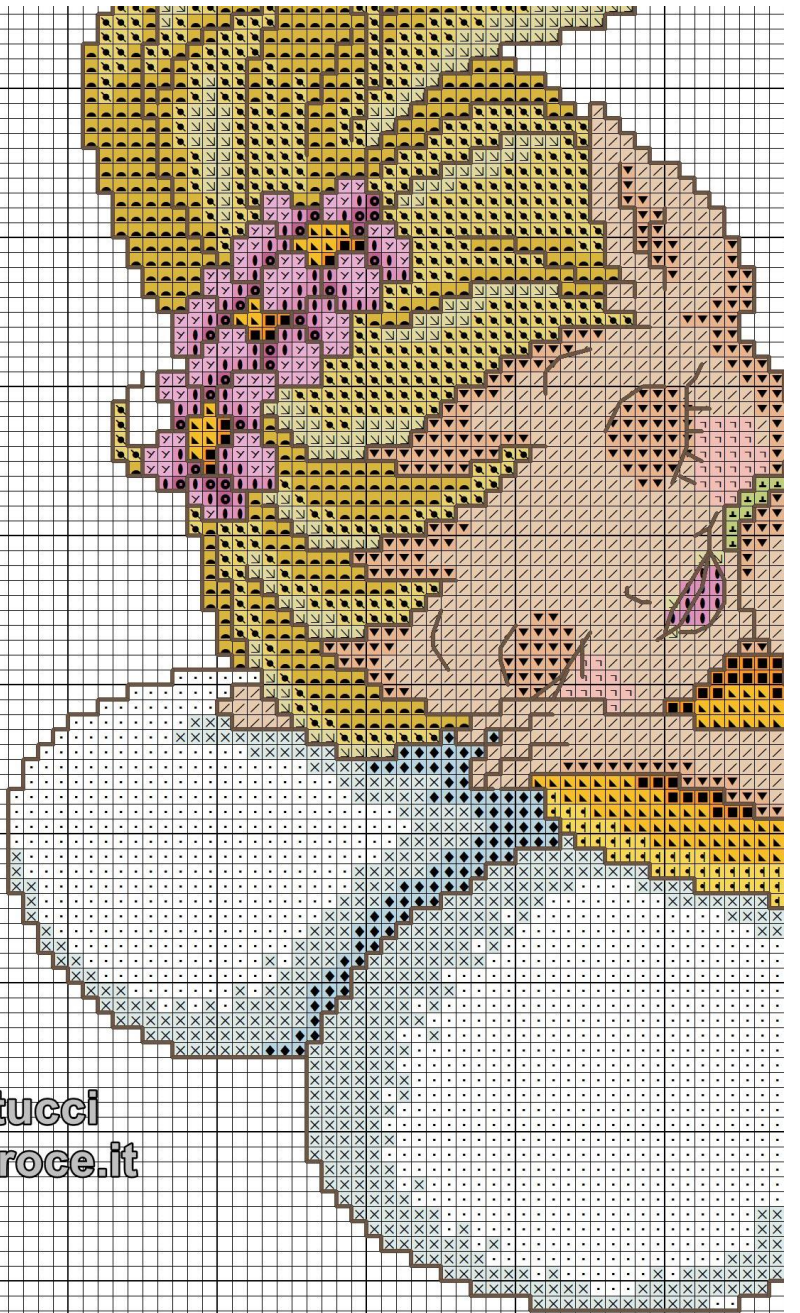
Simonetta Sabatucci
www.ideeapuntocroce.it

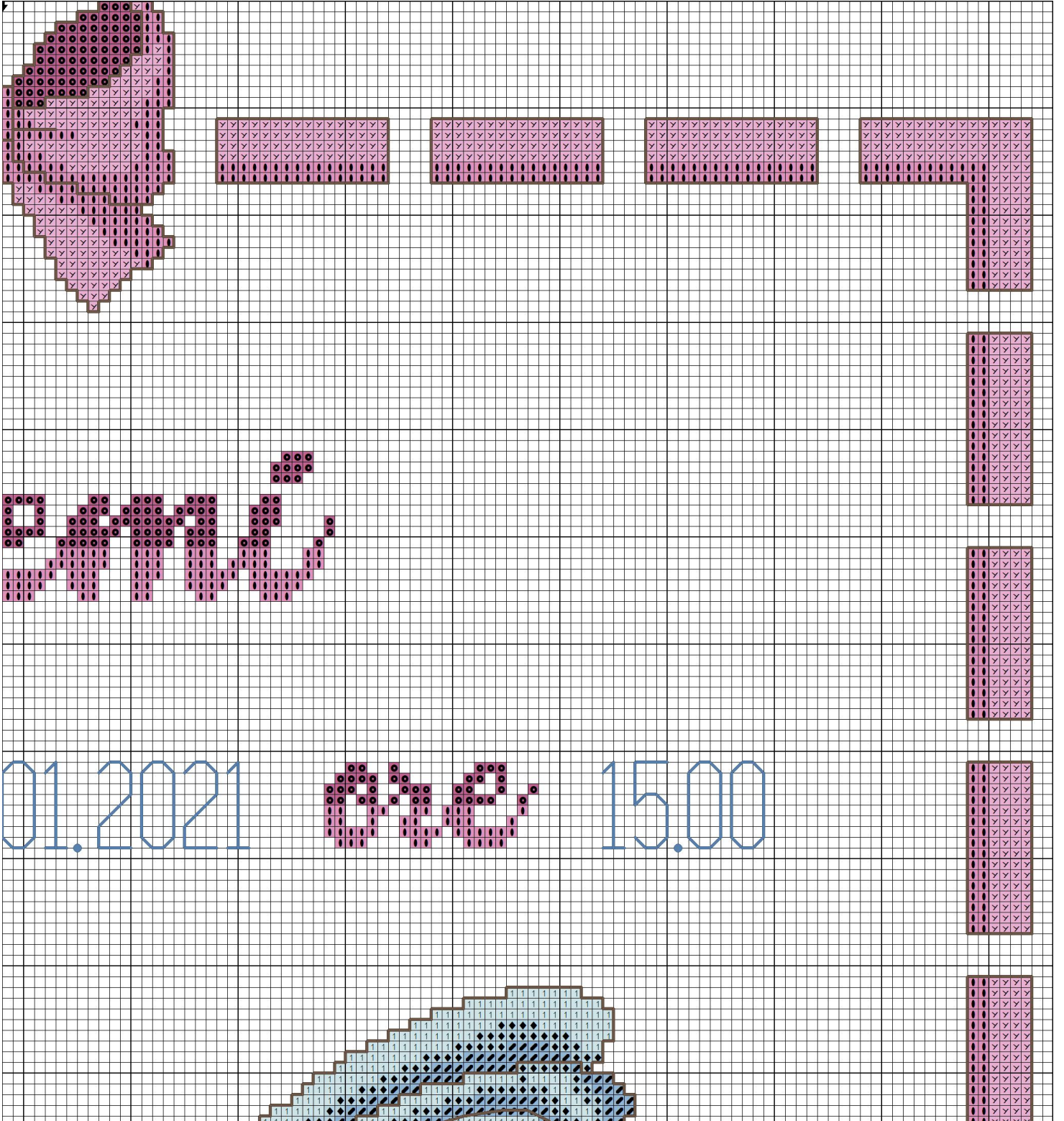
22.

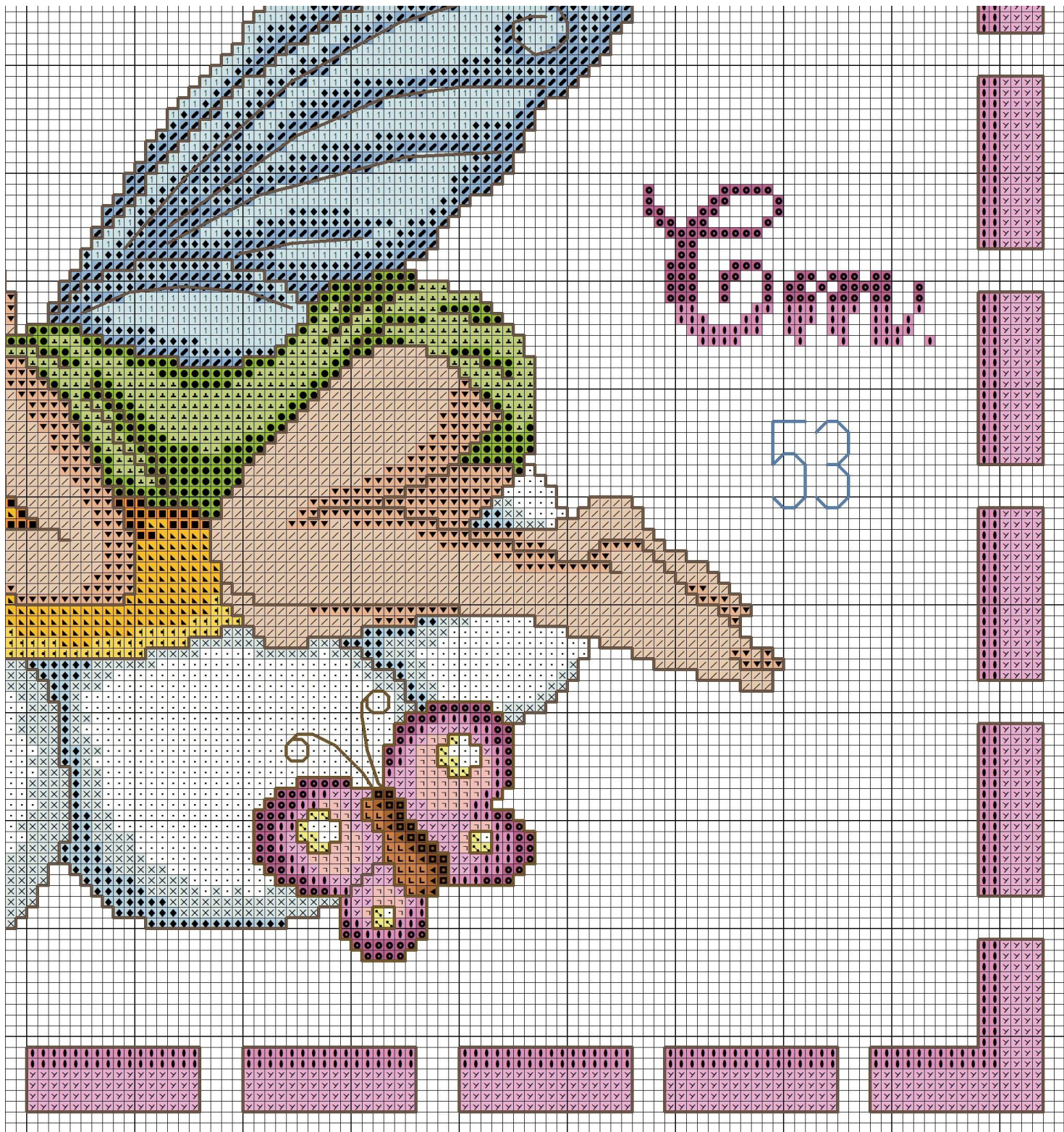


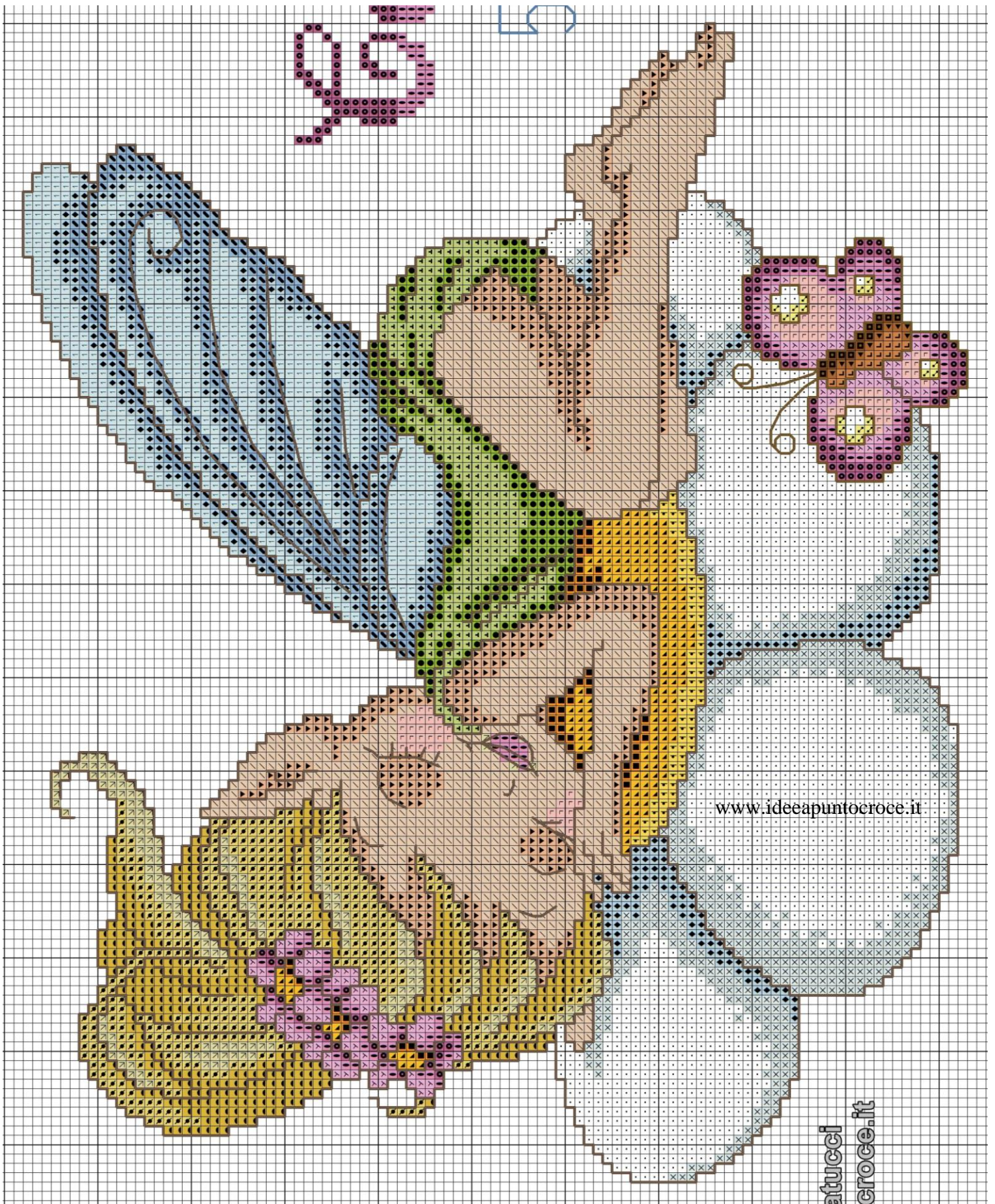
3.00

Simonetta Sabatucci
www.ideeapuntocroce.it









www.idecapuntocroce.it

atucci
croce.it

Designed by: Simonetta Sabatucci

www.ideeapuntocroce.it




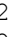

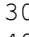

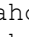
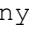
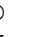










www.ideeapuntocroce.com

www.lackyeberry.com


Fabric: Aida 14, White
194w X 207h Stitches

Size: 14 Count, 35.20w X 37.56h cm




Floss Used for Full Stitches:

Symbol	Strands	Type	Number	Color
	2	DMC	301	Mahogany-MD
	2	DMC	400	Mahogany-DK
	2	DMC	472	Avocado Green-UL LT
	2	DMC	677	Old Gold-VY LT
	2	DMC	727	Topaz-VY LT
	2	DMC	741	Tangerine-MD
	2	DMC	742	Tangerine-LT
	2	DMC	743	Yellow-MD
	2	DMC	761	Salmon-LT
	2	DMC	775	Baby Blue-VY LT
	2	DMC	907	Parrot Green-LT
	2	DMC	950	Desert Sand-LT
	2	DMC	3607	Plum-LT
	2	DMC	3608	Plum-VY LT
	2	DMC	3609	Plum-UL LT
	2	DMC	3755	Baby Blue
	2	DMC	3756	Baby Blue-UL VY LT
	2	DMC	3771	Terra Cotta-UL VY LT
	2	DMC	3776	Mahogany-LT
	2	DMC	3820	Straw-DK
	2	DMC	3822	Straw-LT
	2	DMC	3841	Baby Blue-Pale
	2	DMC	B5200	Snow White

Floss Used for French Knots:

Symbol	Strands	Type	Number	Color
	1	DMC	322	Baby Blue-DK

Floss Used for Back Stitches:

Symbol	Strands	Type	Number	Color
	2	DMC	322	Baby Blue-DK
	2	DMC	433	Brown-MD
	2	DMC	779	Cocoa-DK