

Simionetta Sabatucci
www.ideeapuntocroce.
it

elisa

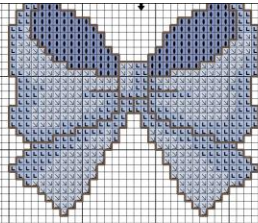
10-4-2021

Ore: 07,35

Kg: 2.960

Gm: 51





Elisa

10-4-2021

Simonetta Sabatucci
www.ideapuntocroce.it

Ore: 07.35

Rg: 2.960

Gm: 5

Simonetta Sabatucci
www.ideapuntocroce.it

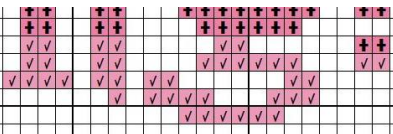




Simonetta Sabatucci
www.ideeapuntocroce.it

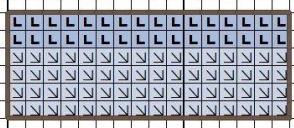
10-4

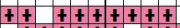
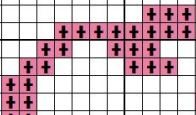
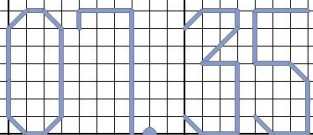
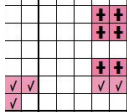
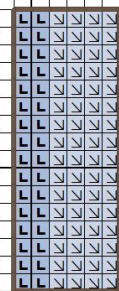
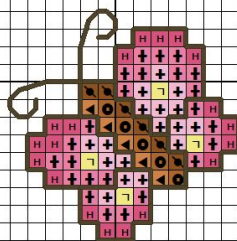
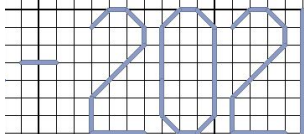
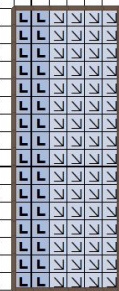
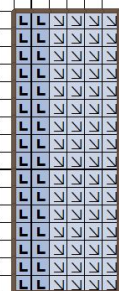
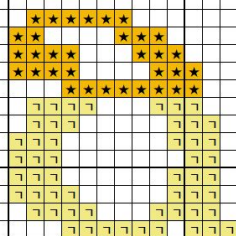
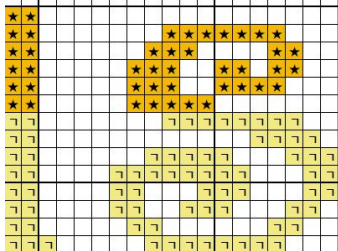
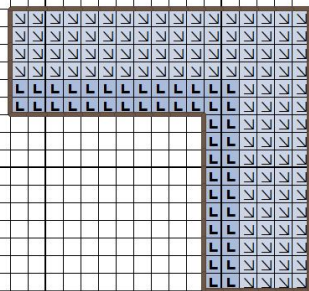
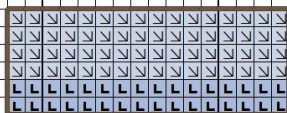
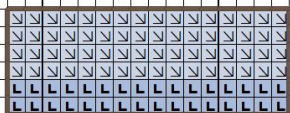
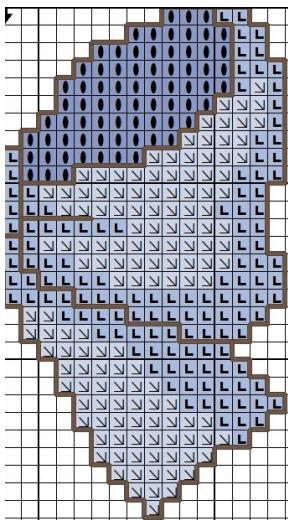
2000

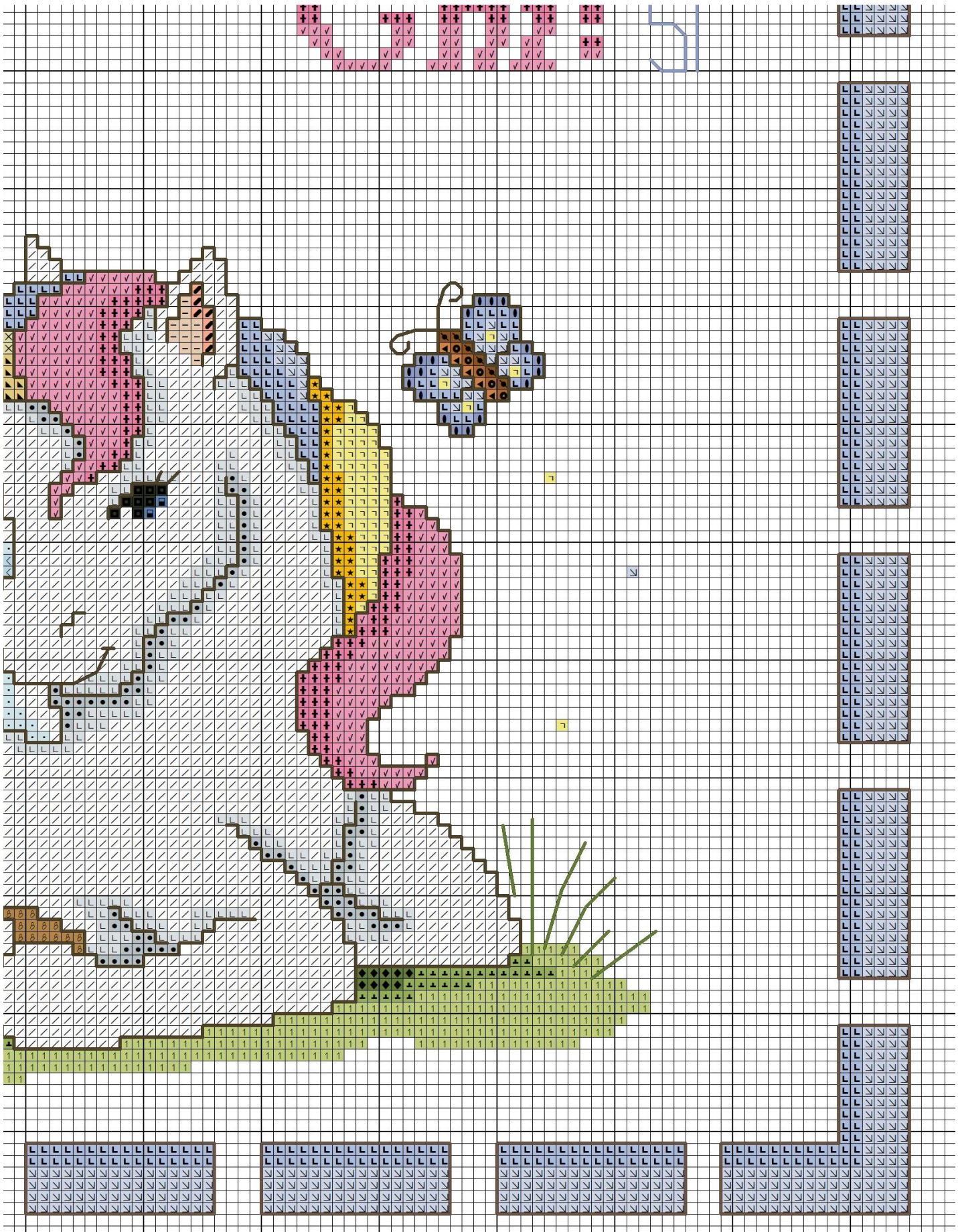


2.300

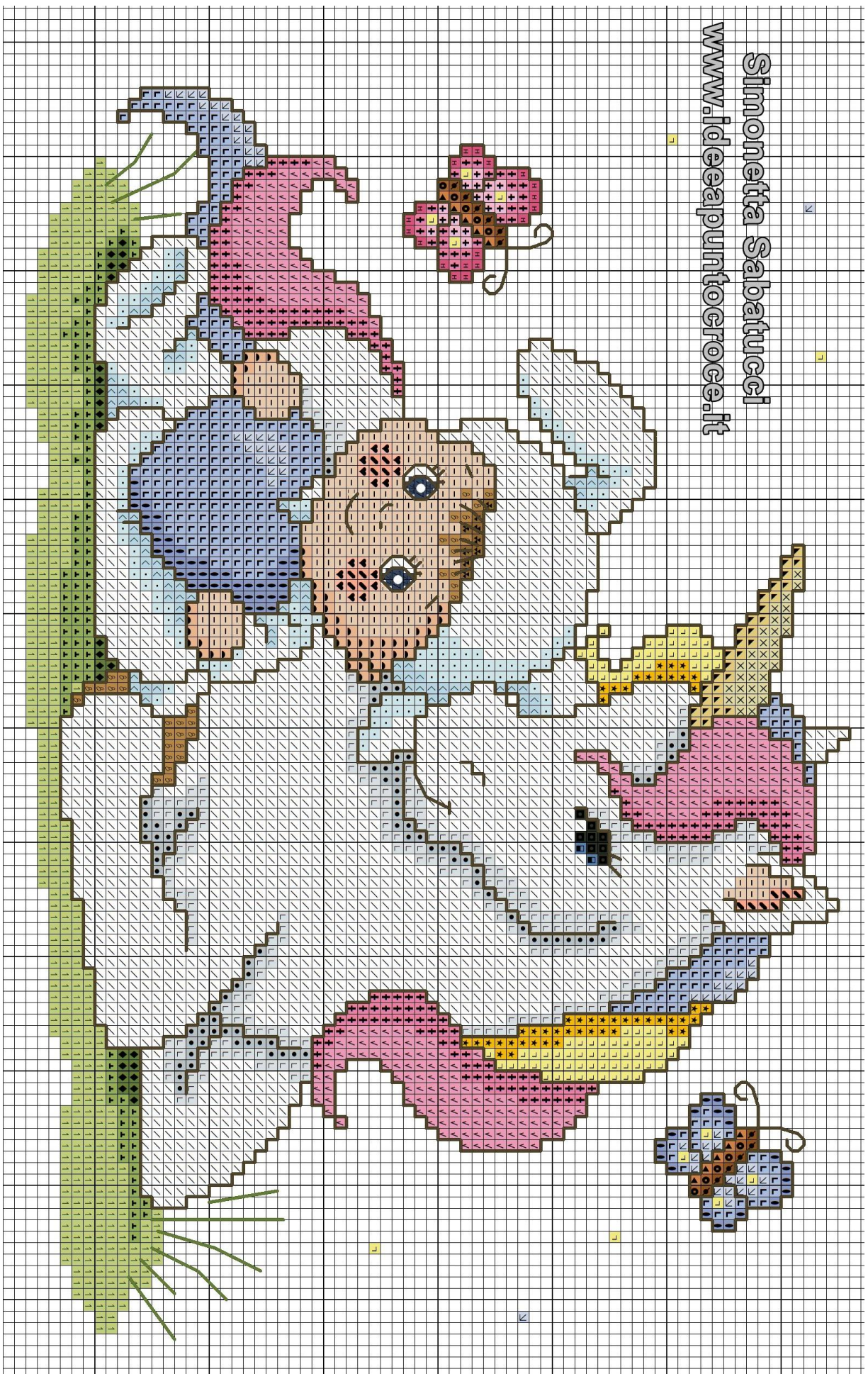
Simonetta Sabatucci
www.ideeapuntocroce.it







Simonetta Sabatucci
www.idealpuntocroce.it



Designed by: Simonetta Sabatucci

www.ideeapuntocroce.it

www.ideeapuntocroce.com
































www.lackyeberry.com

Fabric: Aida 14, White



155w X 207h Stitches

Size: 14 Count, 28.12w X 37.56h cm



Floss Used for Full Stitches:

Symbol	Strands	Type	Number	Color
	2	DMC	156	Blue Violet-MD LT
	2	DMC	301	Mahogany-MD
	2	DMC	310	Black
	2	DMC	322	Baby Blue-DK
	2	DMC	336	Navy Blue
	2	DMC	341	Blue Violet-LT
	2	DMC	400	Mahogany-DK
	2	DMC	415	Pearl Gray
	2	DMC	434	Brown-LT
	2	DMC	435	Brown-VY LT
	2	DMC	469	Avocado Green
	2	DMC	471	Avocado Green-VY LT
	2	DMC	472	Avocado Green-UL LT
	2	DMC	602	Cranberry-MD
	2	DMC	603	Cranberry
	2	DMC	604	Cranberry-LT
	2	DMC	605	Cranberry-VY LT
	2	DMC	676	Old Gold-LT
	2	DMC	677	Old Gold-VY LT
	2	DMC	727	Topaz-VY LT
	2	DMC	762	Pearl Gray-VY LT
	2	DMC	775	Baby Blue-VY LT
	2	DMC	950	Desert Sand-LT
	2	DMC	972	Canary-DK
	2	DMC	3341	Apricot
	2	DMC	3747	Blue Violet-VY LT
	2	DMC	3771	Terra Cotta-UL VY LT
	2	DMC	3776	Mahogany-LT
	2	DMC	3824	Apricot-LT
	2	DMC	3841	Baby Blue-Pale
	2	DMC	5200	White



Floss Used for Half Stitches:

Symbol	Strands	Type	Number	Color
	2	DMC	336	Navy Blue
	2	DMC	950	Desert Sand-LT






Floss Used for Quarter Stitches:

Symbol	Strands	Type	Number	Color
	2	DMC	336	Navy Blue
	2	DMC	950	Desert Sand-LT

Floss Used for French Knots:

Symbol	Strands	Type	Number	Color
	1	DMC	156	Blue Violet-MD LT
	1	DMC	5200	White

Floss Used for Back Stitches:

Symbol	Strands	Type	Number	Color
	2	DMC	156	Blue Violet-MD LT
	2	DMC	336	Navy Blue
	2	DMC	469	Avocado Green
	2	DMC	779	Cocoa-DK
	2	DMC	938	Coffee Brown-UL DK