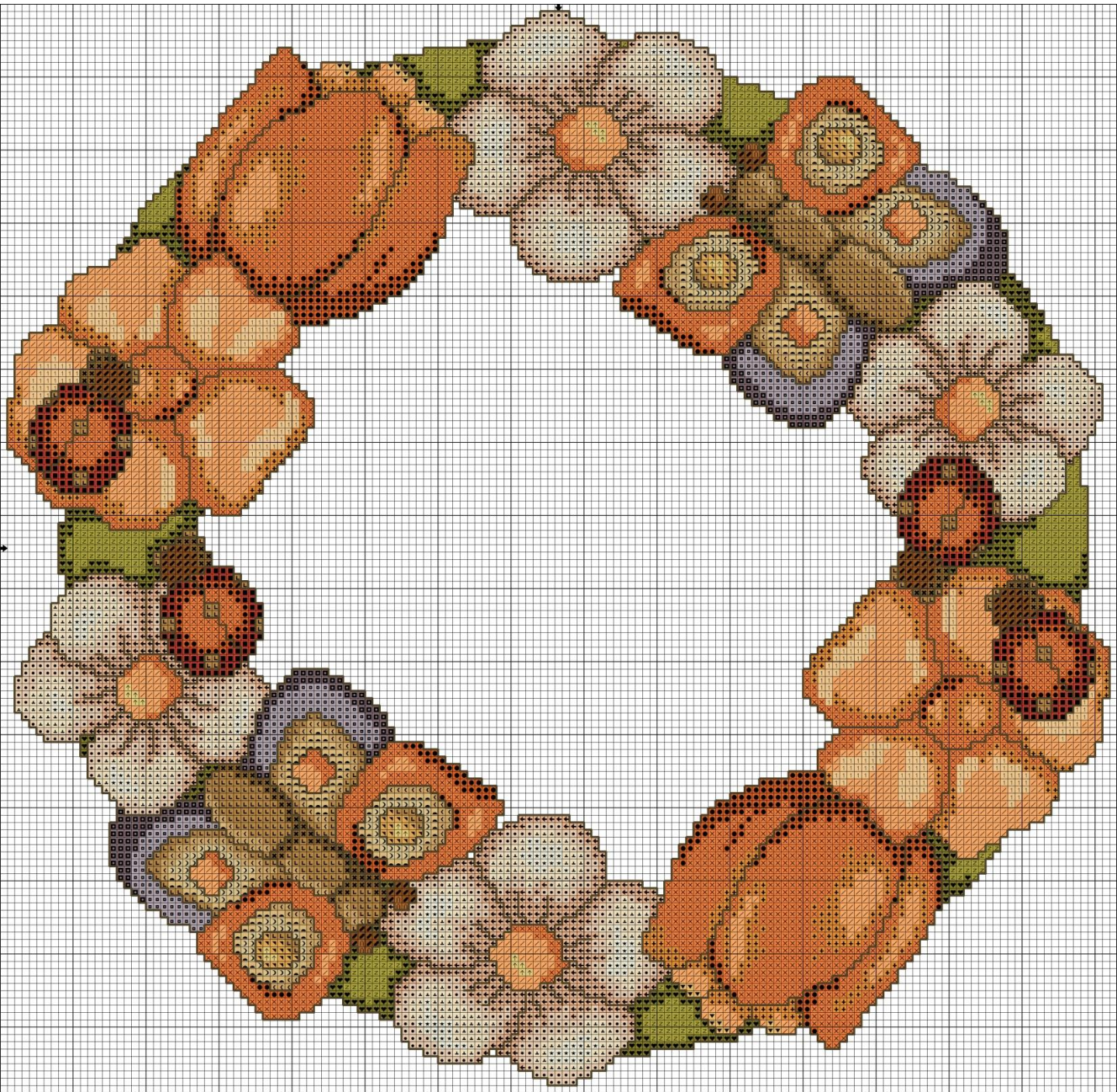
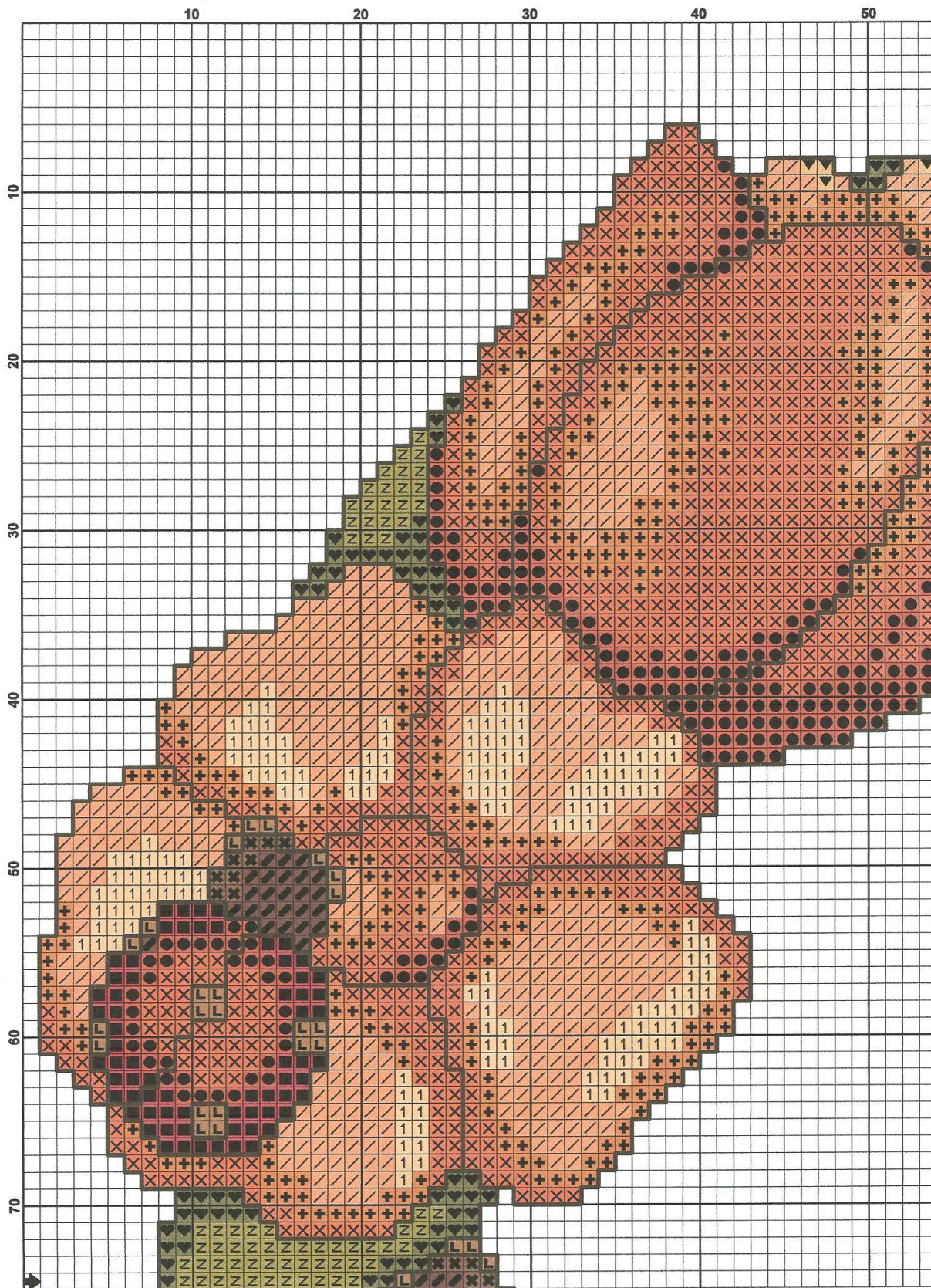
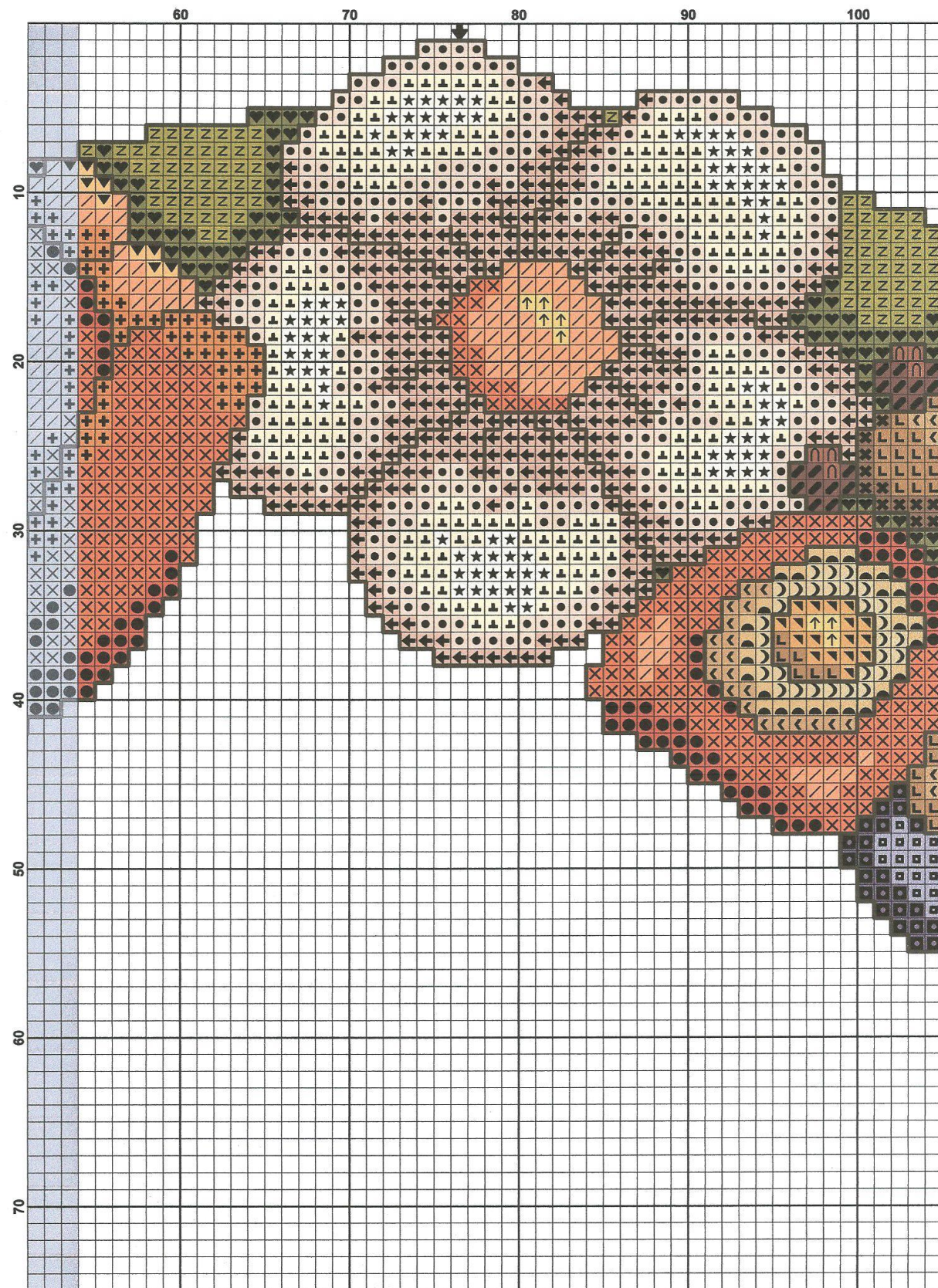


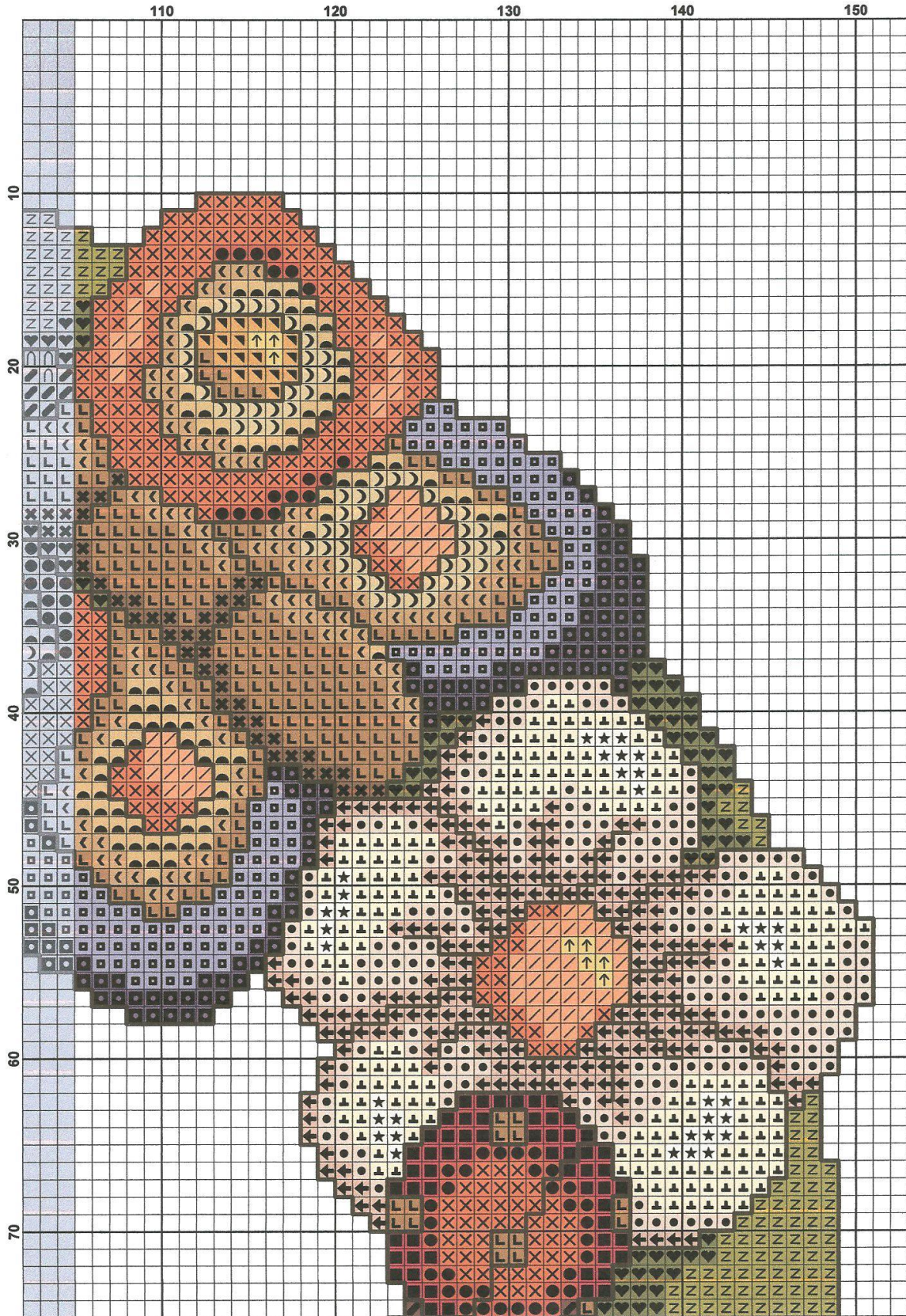


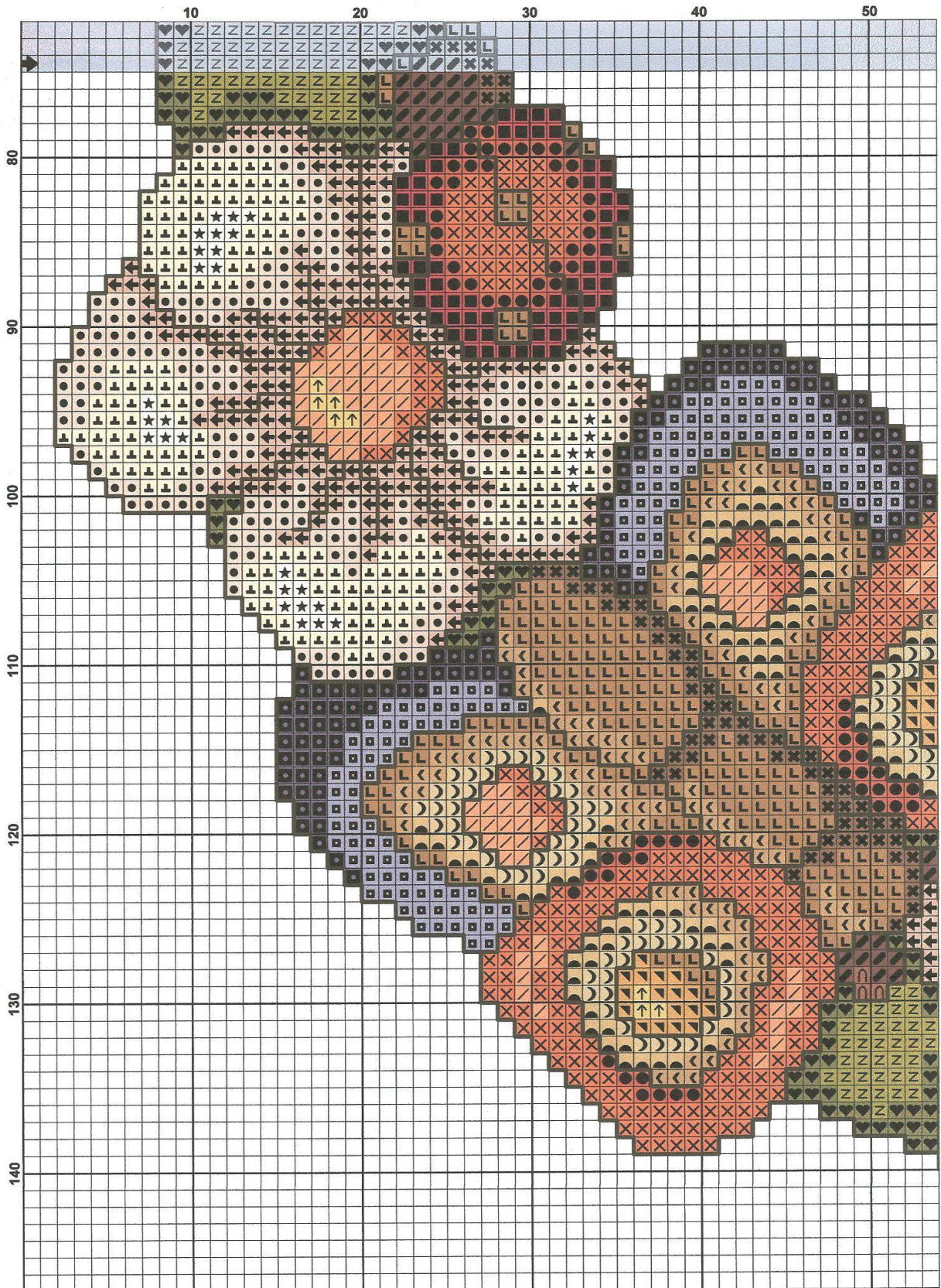
W.IDEEAPUNTOCRO

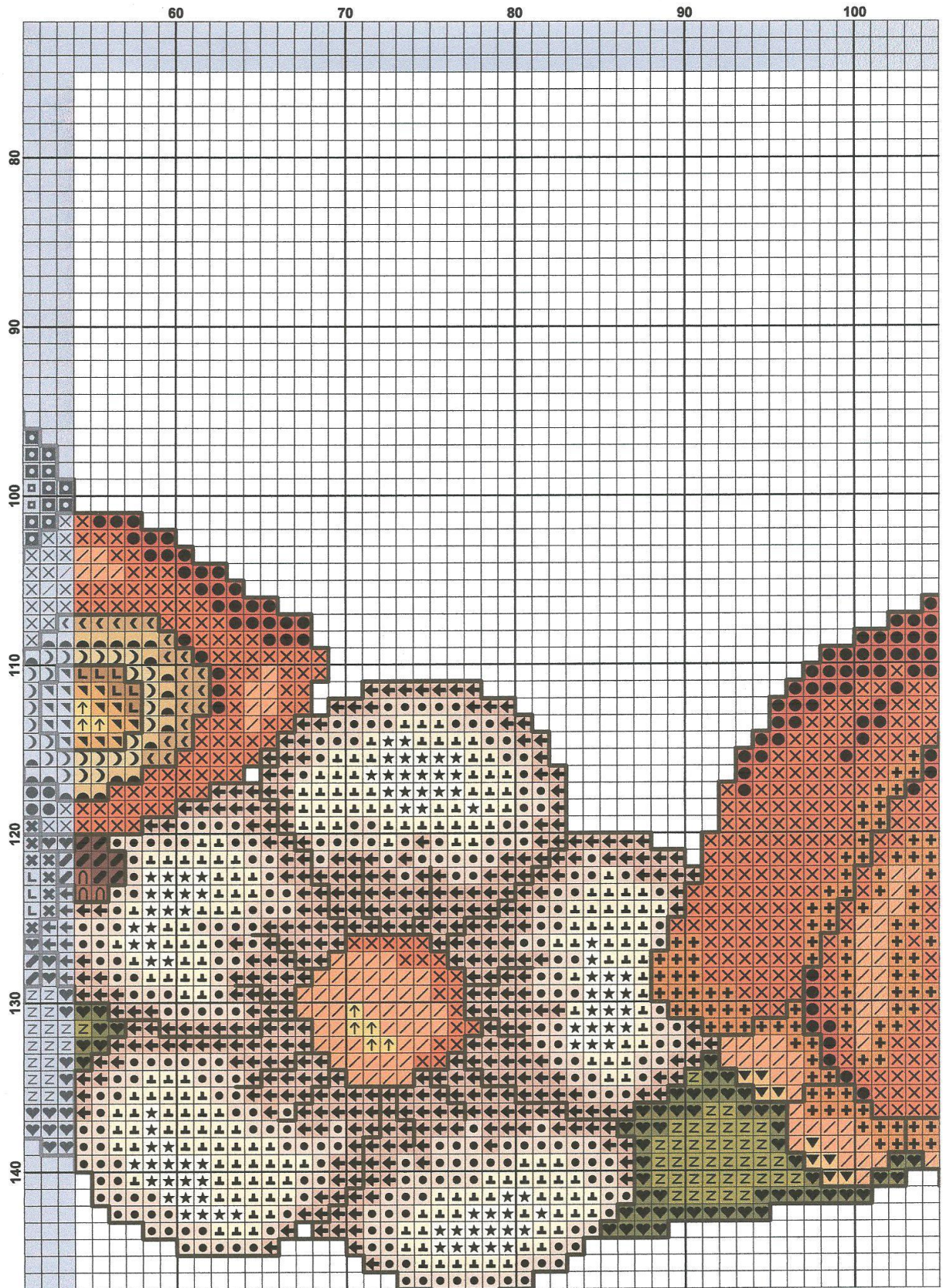


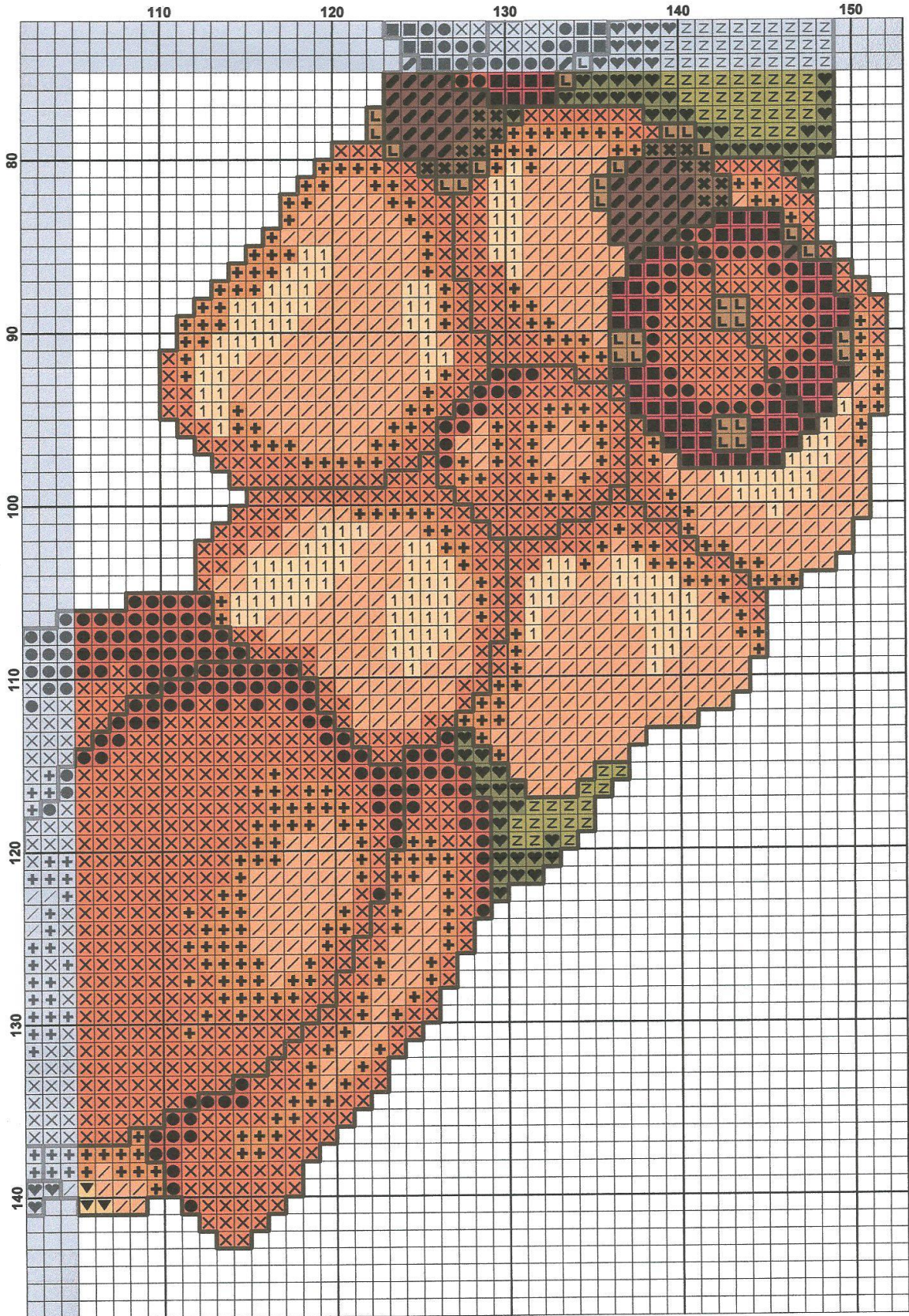


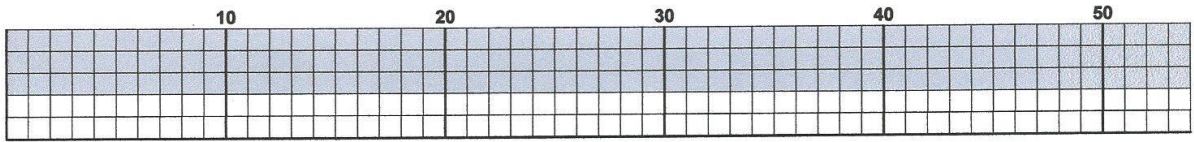


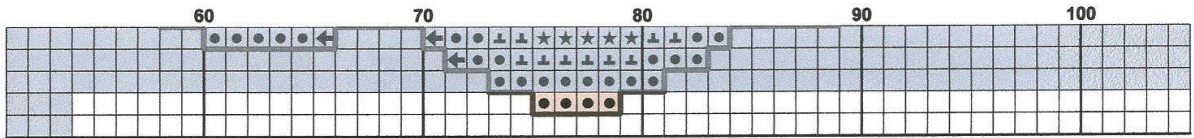












Fabric: Aida 14, White
 151w X 147h Stitches
Size: 14 Count, 27.40w X 26.67h cm

Floss Used for Full Stitches:

Symbol	Strands	Type	Number	Color
	2	DMC	301	Mahogany-MD
	2	DMC	400	Mahogany-DK
	2	DMC	434	Brown-LT
	2	DMC	435	Brown-VY LT
	2	DMC	436	Tan
	2	DMC	437	Tan-LT
	2	DMC	676	Old Gold-LT
	2	DMC	720	Orange Spice-DK
	2	DMC	721	Orange Spice-MD
	2	DMC	722	Orange Spice-LT
	2	DMC	732	Olive Green
	2	DMC	733	Olive Green-MD
	2	DMC	738	Tan-VY LT
	2	DMC	900	Burnt Orange-DK
	2	DMC	950	Desert Sand-LT
	2	DMC	951	Tawny-LT
	2	DMC	977	Golden Brown-LT
	2	DMC	3041	Antique Violet-MD
	2	DMC	3042	Antique Violet-LT
	2	DMC	3770	Tawny-VY LT
	2	DMC	3771	Terra Cotta-UL VY LT
	2	DMC	3827	Golden Brown-Pale
	2	DMC	3853	Autumn Gold-DK
	2	DMC	3856	Mahogany-UL VY LT

Floss Used for Back Stitches:

Symbol	Strands	Type	Number	Color
	2	DMC	938	Coffee Brown-UL DK